

Cross-cutting Innovations in Student Assessment and Universal Screening

Elizabeth Albro, PhD

Commissioner

National Center for Education Research

Javits PD Meeting
January 10, 2024

What is universal screening used for?

Driving equity of opportunity – and, we hope, outcomes

To ensure that all learners have equal access to opportunities and resources to support excellence in their education

To assess school readiness



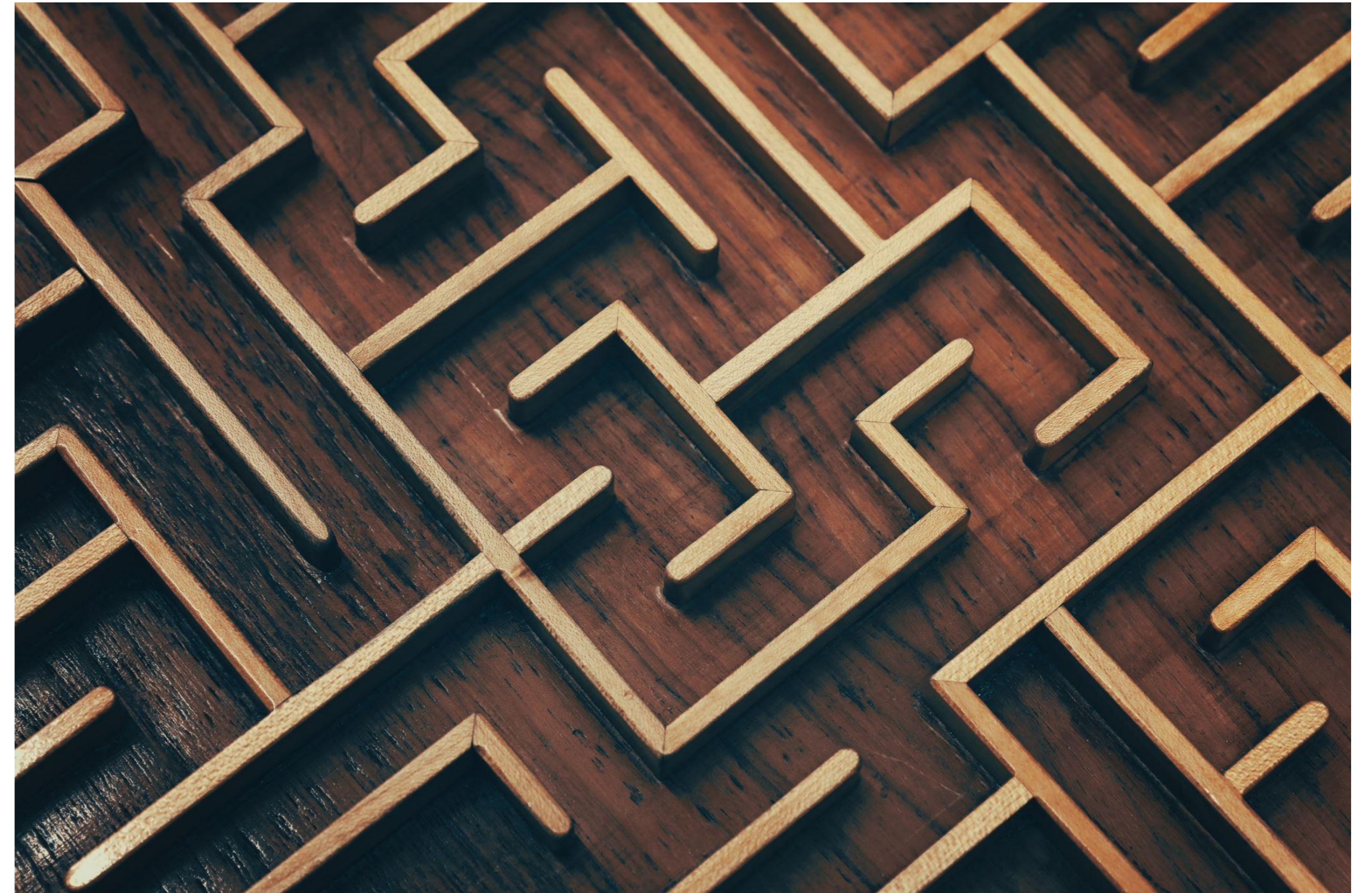
An example

Individual Growth and Development Indicators (IGDIs)

- measures of early language, literacy, and numeracy, as well as whole child development, designed for use with preschool children
- fun for children to complete, and easy for educators to use
- Available in English, Spanish, and Hmong

To identify barriers to access

- At the time of enrollment
- Current language/multi-lingual status



To assess speech and language difficulties



- Needed to meet the requirements of IDEA
- Outcomes incorporated into IEPs

What does your school or school district use universal screening for?

How is universal screening implemented?

Current practice

Group-administered paper and pencil assessments



- These are the traditional ways in which exceptional ability and unique needs are determined.
- Test scores from such measures are used as critical identifiers of who should be considered for additional services and opportunities.

One-on-one in person assessments

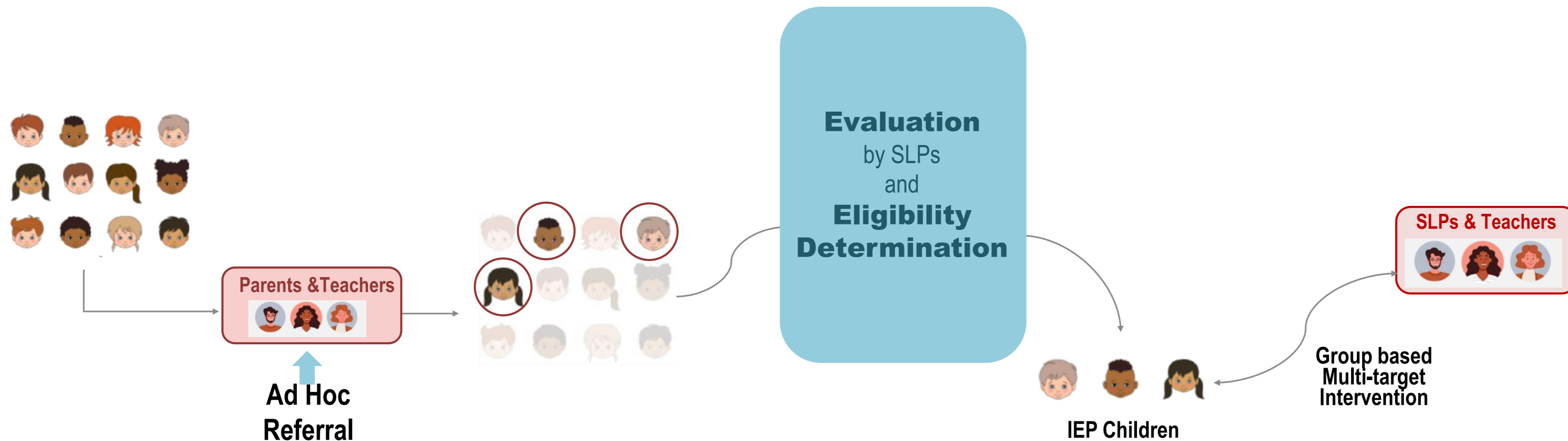
- IGDIs are one example
- Delivered on an iPad but in a one-on-one in person context
- Goal is to ensure the assessment is engaging and that the preschooler completes the assessments



How is universal screening implemented in your school or district?

New and novel possibilities

Existing S&L Practices



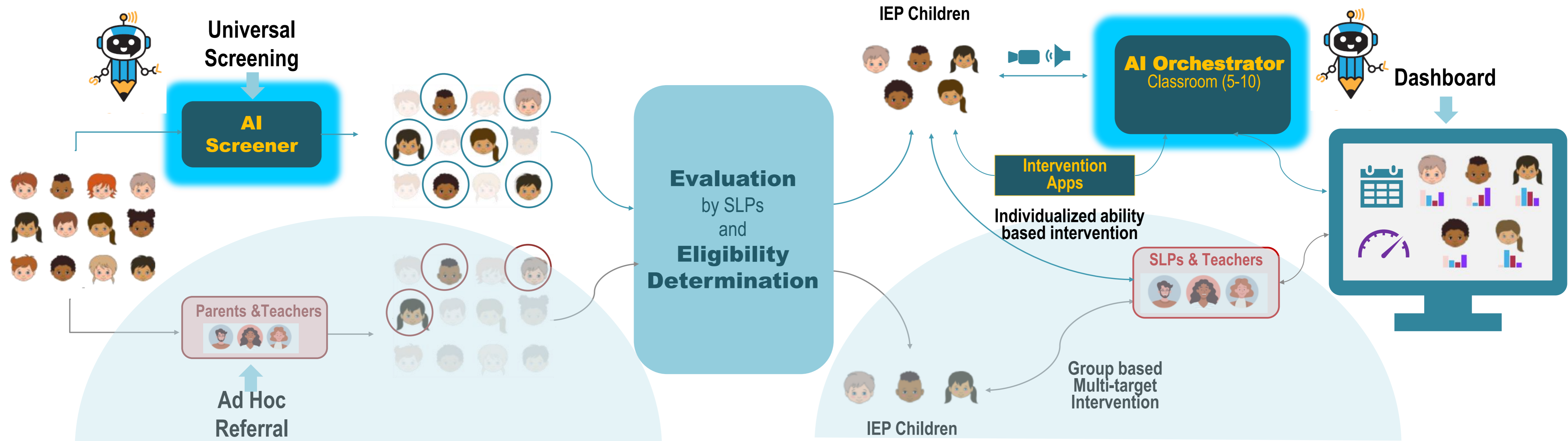
Children in need may be missed or identified late with **ad-hoc referral while lack of individualized intervention produces **suboptimal outcomes** for all**

Using AI to support the work of the SLP teams



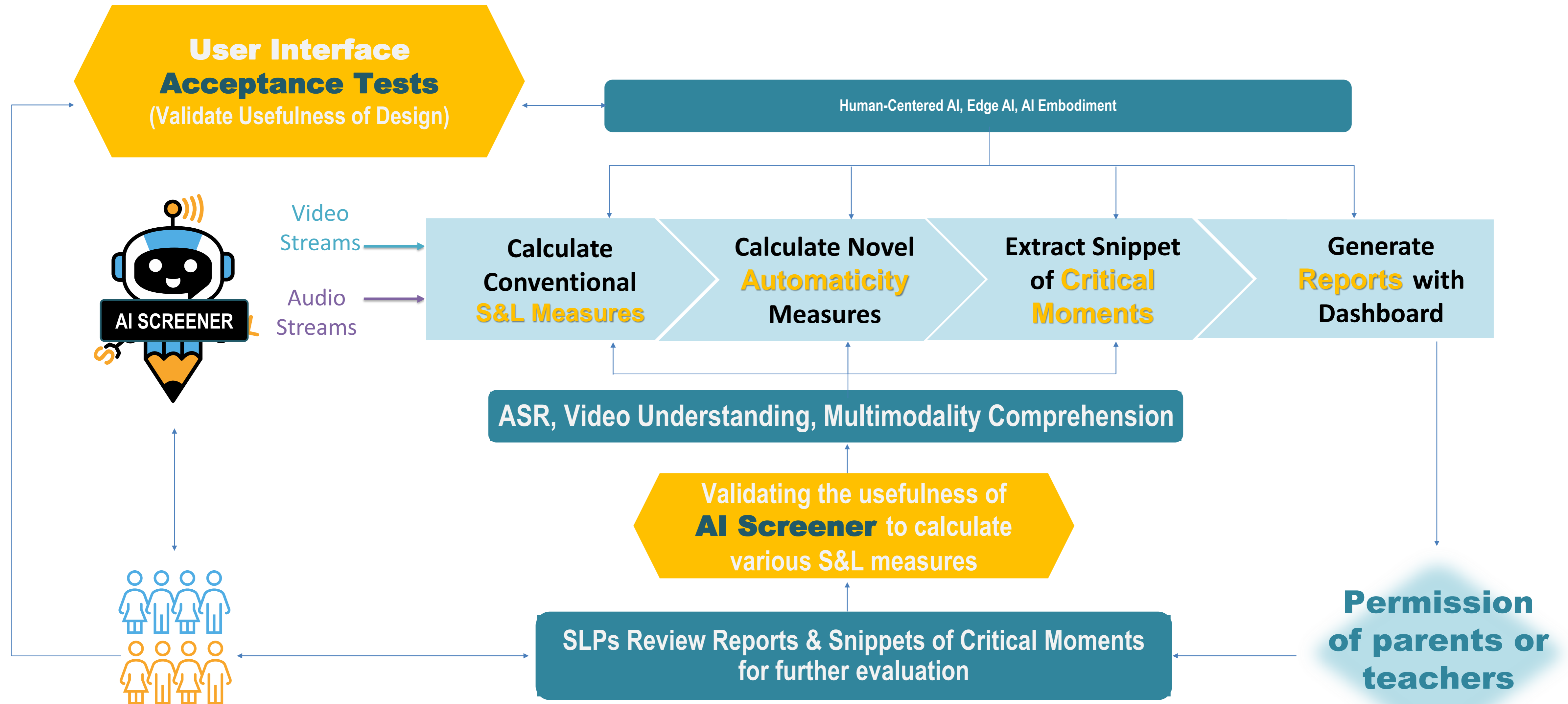
By developing both an AI Screener
and an AI Orchestrator

AI Screener and AI Orchestrator



Advance **use-inspired** artificial intelligence (AI) technologies to **scale** the availability of SLPs for **universal screening** and **individualized ability-based** interventions

High-level design for AI Screener



Early childhood classrooms (3 – 5 years)

Slides created by the AI4ExceptionalEd Team

Enabling early and frequent universal screening

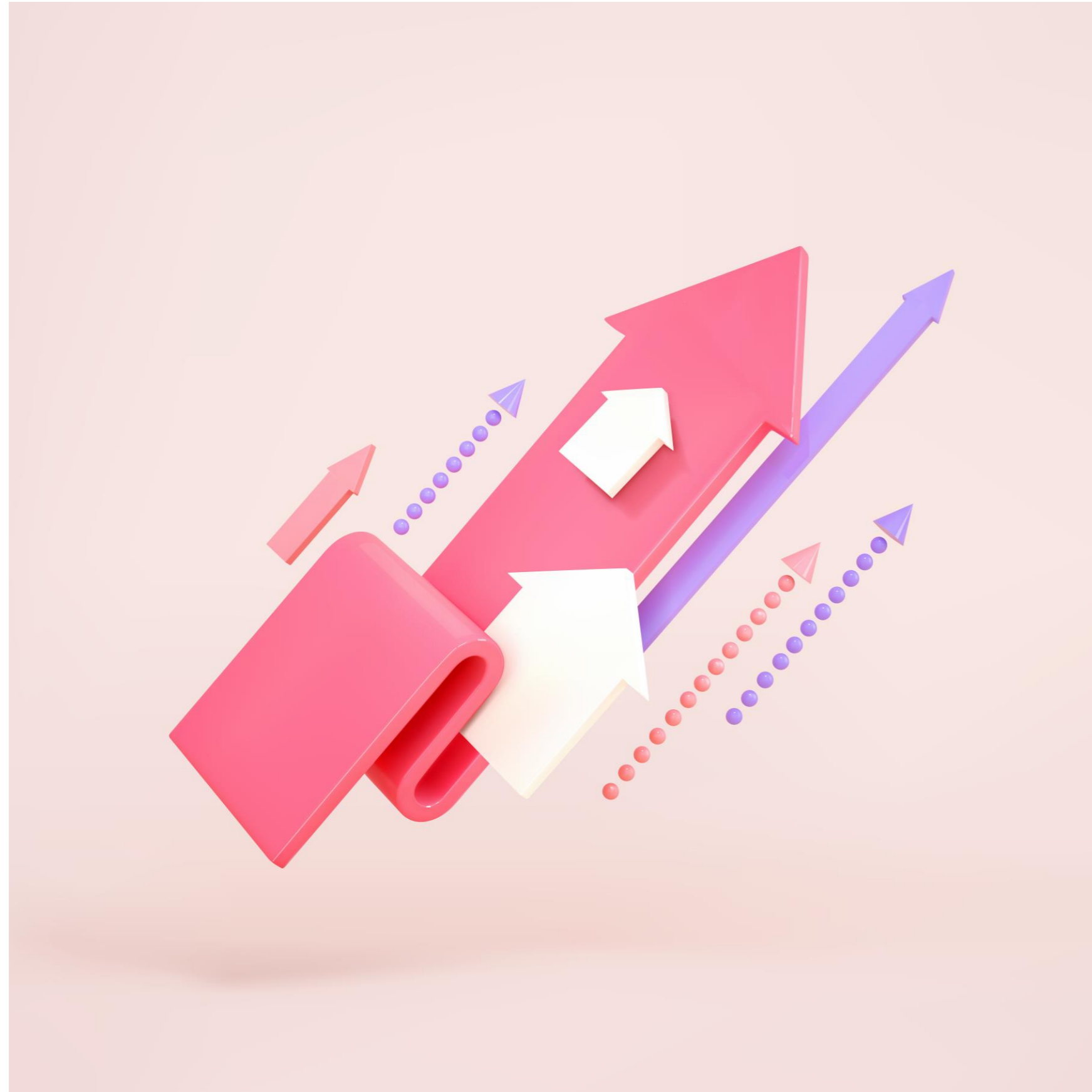


AI SCREENER IN ACTION

How might AI support gifted identification and services?

What is being done to ensure universal screening for giftedness is being implemented?

Generating data to inform decision-making



National Center for Research on Gifted Education

- Gifted services are not equally distributed across schools within districts.
- Underserved populations are not being identified at the same rates as non-underserved students
- Extensive use of cognitive tests to identify gifted students

Establishing state-level policy



- Washington state law “Advancing Equity in Programs for Highly Capable Students”
- Implementation begins in the 2023-24 school year

Resources

EdInstruments

- EdInstruments is a developing library of educational measurement tools intended to be a resource for scholars, educators, schools, districts and the general public.
- <https://edinstruments.com/>

Standards for Excellence in Education Research (SEER)

- Pre-register studies
- Make findings, methods, and data open
- Address inequities in learners' opportunities, access to resources, and outcomes
- Identify interventions' components
- Document treatment implementation and contrast
- Analyze interventions' costs
- Use high-quality outcome measures
- Facilitate generalization of study findings
- Support scaling of promising interventions

<https://ies.ed.gov/seer/>

Research Funding Opportunities @ IES

<https://ies.ed.gov/funding>

Currently Open Funding Opportunities

- Education Research and Development Center (84.305C)
 - Improving Rural Education
 - Using Generative Artificial Intelligence to Augment Teaching and Learning in Classrooms
 - K–12 Teacher Recruitment and Retention Policy
 - Improving Outcomes in Elementary Science Education
- Applications **due March 11, 2024**
- Stay tuned for more competition announcements later this winter and spring

Learn About New Opportunities

- Sign up for the [IES Newsflash](#)
- Funding opportunities are announced in *The Federal Register*
- Find the [funding opportunities page](#) of the IES website
- Review [current Requests for Applications](#) (RFAs)
- Contact relevant Program Officer(s)



Thank you! Questions?

For Questions and More Information

Elizabeth Albro, PhD
Commissioner,
National Center for Education
Research
Elizabeth.Albro@ed.gov

Follow/Like IESResearch on:

- X @IESResearch
- Facebook <https://www.facebook.com/IESResearch/>

Explore the Inside IES Research Blog
<https://ies.ed.gov/blogs/research/>

Where You Can Find Me on Social Media

- X: @LizAlbro
- LinkedIn: <https://www.linkedin.com/in/elizabeth-albro-phd-58095b6/>